

# V.S.R. Government Degree & P.G. College

NAAC Accredited with a CGPA of 2.7 score at 'B+' Grade



Movva – 521135, Krishna Dt. A.P.

Email id: [gdcjkc.movva@gmail.com](mailto:gdcjkc.movva@gmail.com)

Website: [www.gdcmovva.ac.in](http://www.gdcmovva.ac.in)

## Programme Schedule

### Student Satisfaction Survey 2023-24

#### Student Satisfaction Survey (SSS) on overall institutional performance

Students are the primary stakeholders of an institution, and every initiative taken by the institution aims to create a supportive, barrier-free environment that fosters academic excellence. This survey follows the questionnaire framework recommended by NAAC, covering areas such as classroom experience, administrative performance, and the quality of extracurricular offerings. While online student satisfaction surveys can be distributed in various formats, email remains one of the most effective methods for reaching students.

#### GUIDELINES FOR STUDENTS:

Student will have to respond to all the questions compulsorily with sincere effort and thought. Student identity will not be revealed.

This survey is being conducted by V.S.R. Govt Degree & P.G College, Movva with the aim to upgrade the quality in higher education.

Each question has five options and the students are required to choose the most appropriate one.

Students are required to give answers for the following questions:

1. Please confirm this is the first and only time you answer this survey. a) Yes b) No
2. Age:
3. Branch /Department:
4. Gender: a) Female b) Male c) Transgender
5. What degree/program are you pursuing now? a) Bachelors b) Masters

## SURVEY PROCESS:

- The survey is conducted and reported by Internal Quality Assurance Cell (IQAC) with the support of Heads and Coordinators of all the Departments. The Questioners were prepared in the form of Google Form and circulated to all the Departments and then to Students through Coordinators.
- The feedback was taken on different attributes like; Basic Facilities, Basic Services, Co-curricular and Extracurricular Activities.
- The responses obtained on these dimensions are compiled into a Spread Sheet, analyzed and Logical Conclusions are drawn there from.
- The Questionnaire consisting of 21 questions is shared with the students and their responses are noted and analyzed graphically in terms of percentage. After analysis, results are analyzed by IQAC Team.
- The results of the survey will help the institution to understand both short term and long term needs of the students and initiate remedial action to improve the facilities wherever it is required. The outcome of this survey will provide a base for planning for the future.
- IQAC conveys thanks to the students who have expressed their opinions and/or views sincerely.

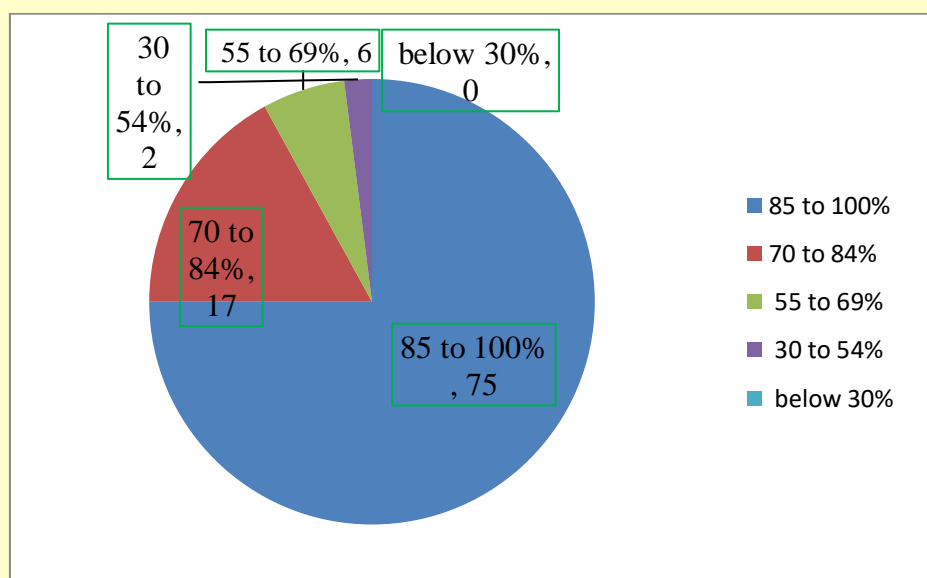
## QUESTIONS ASKED IN QUESTIONNAIRE:

1. How much of the syllabus was covered in the class?
2. How well did the teachers prepare for the classes?
3. How well is the teachers able to communicate?
4. The Teacher's approach to teaching can best be described as
5. Fairness of the internal evaluation process by the teachers
6. Was your performance in assignments discussed with you?
7. The teacher takes active interest in arranging field visit for students.
8. The teaching process in the class room facilitates you in cognitive, social and emotional growth.
9. The teacher provides multiple opportunities to learn and grow
10. The teacher informs you about your expected competencies, course outcomes and programme outcomes.
11. Your teacher does a necessary follow-up with an assigned task to you.
12. The teacher illustrates the concepts through examples and applications.

13. The teacher identifies your strengths and encourages you with providing right level of challenges.
14. The teacher is able to identify your weaknesses and help you to overcome them.
15. The teacher makes effort to engage students in the monitoring, review and continuous quality improvement of the teaching learning process.
16. The teachers use student centric methods, such as experiential learning, participative learning and problem solving for enhancing learning experiences.
17. The teacher encourages you to participate in extracurricular activities.
18. Efforts are made by the teacher to inculcate soft skills, life skills and employability skills to make you ready for the world of work
19. The teacher uses ICT Tools such as LCD Projector, Multimedia, etc. while teaching
20. The overall quality of teaching-learning process in your institute is very good.
21. Give three observations/ suggestions to improve the overall teaching-learning experience in the class with reference to the teacher.

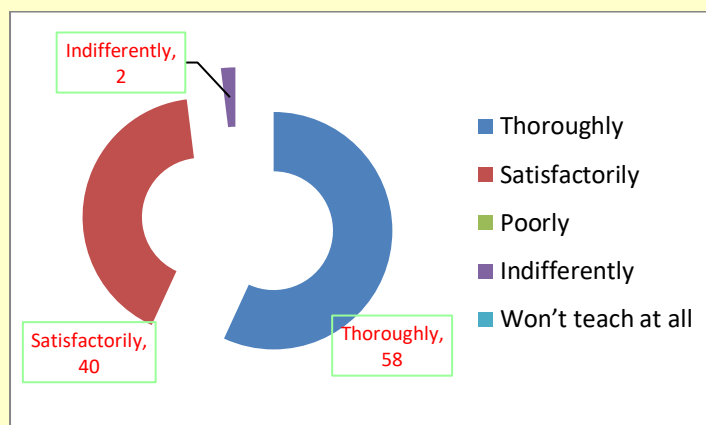
#### 1. How much of the syllabus was covered in the class?

S. No	Option	Percentage of Response
1	85 to 100%	75
2	70 to 84%	17
3	55 to 69%	6
4	30 to 54%	2
5	below 30%	0
	Total	100



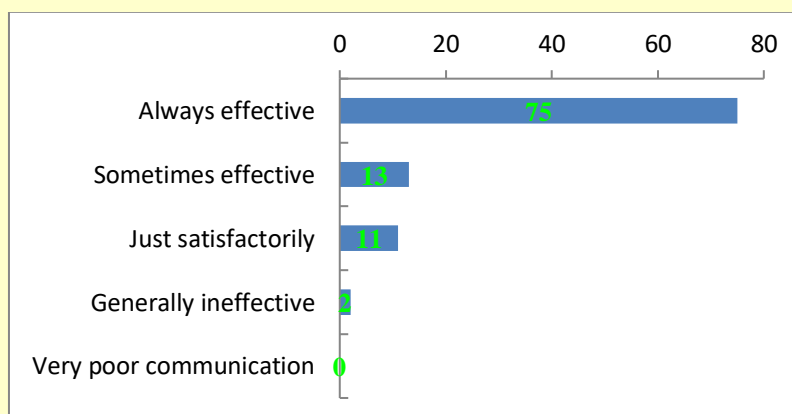
## 2. How well did the teachers prepare for the class?

S. No	Option	Percentage of Response
1	Thoroughly	58
2	Satisfactorily	40
3	Poorly	0
4	Indifferently	2
5	won't teach at all	0
	Total	100



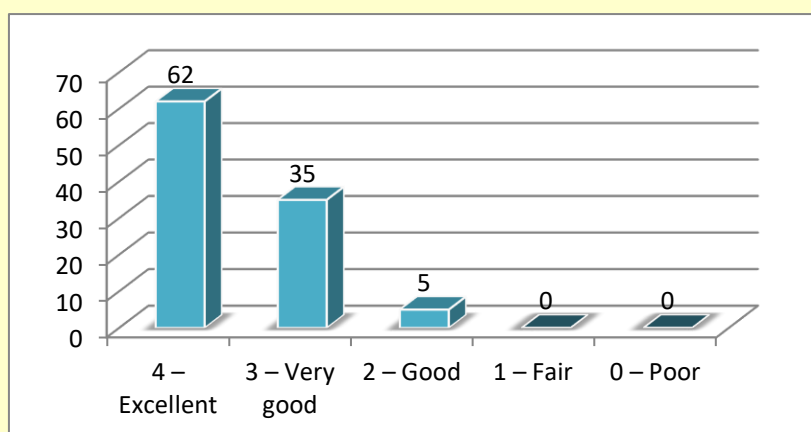
## 3. How well were the teachers able to communicate?

S. No	Options	Percentage of Response
1	Always effective	75
2	Sometimes effective	13
3	Just satisfactorily	11
4	Generally ineffective	2
5	Very poor communication	0
	Total	100



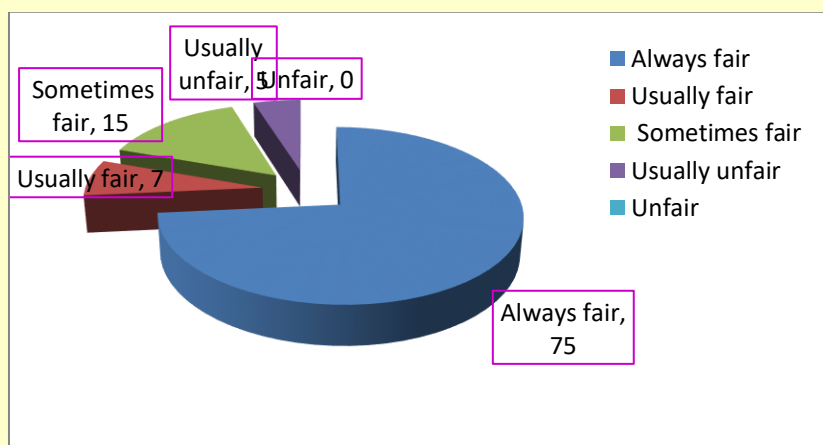
4. The teacher's approach to teaching can best be described as

S. No	Options	Percentage of Response
1	Excellent	62
2	Very good	35
3	Good	5
4	Fair	0
5	Poor	0
	Total	100



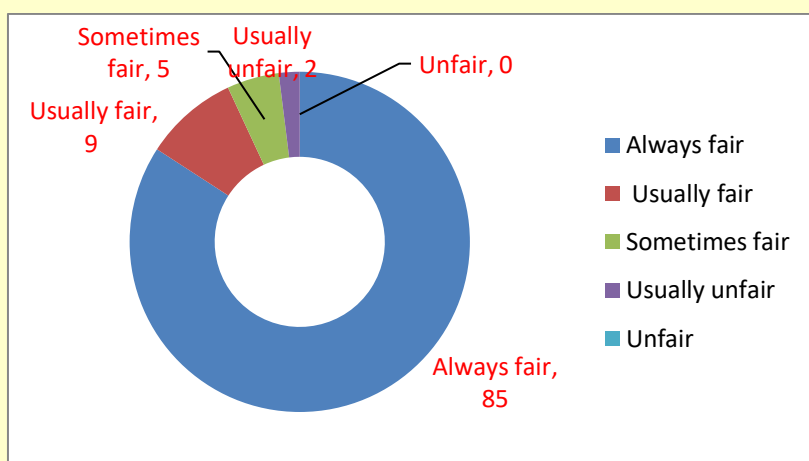
5. Fairness of the internal evaluation process by the teachers

S. No	Options	Percentage of Response
1	Always fair	75
2	Usually fair	7
3	Sometimes fair	15
4	Usually unfair	5
5	Unfair	0
	Total	100



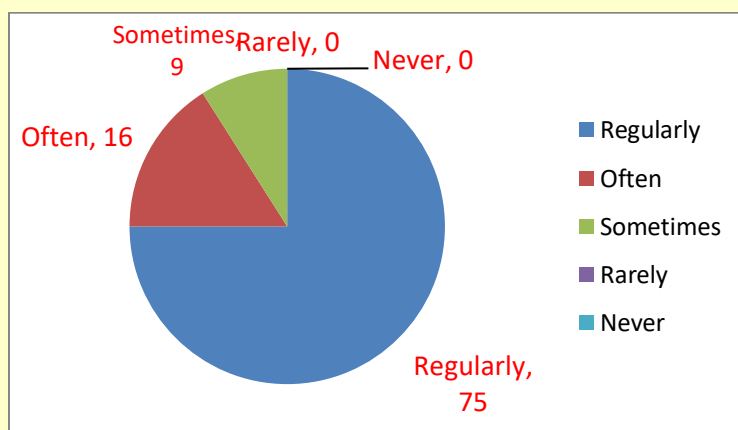
6. Was your performance in assignments discussed with you?

S. No	Options	Percentage of Response
1	Always fair	85
2	Usually fair	9
3	Sometimes fair	5
4	Usually unfair	2
5	Unfair	0
	Total	100



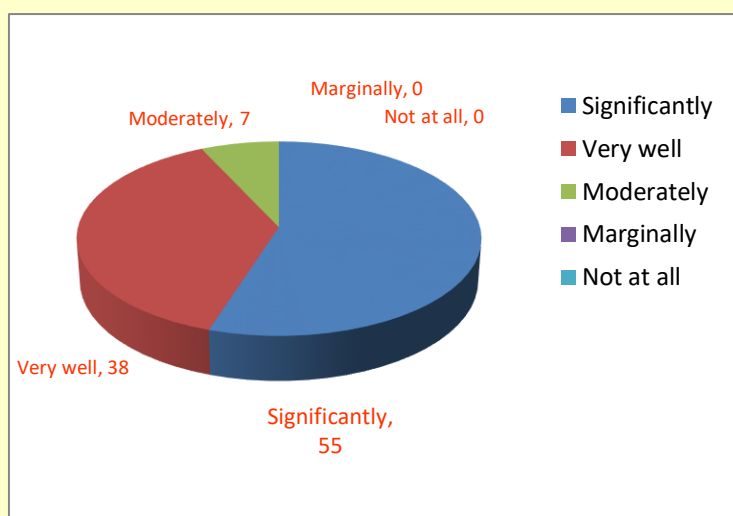
7. The institute takes active interest in promoting internship, student exchange, and field visit opportunities for students.

S. No	Options	Percentage of Response
1	Regularly	75
2	Often	16
3	Sometimes	9
4	Rarely	0
5	Never	0
	Total	100



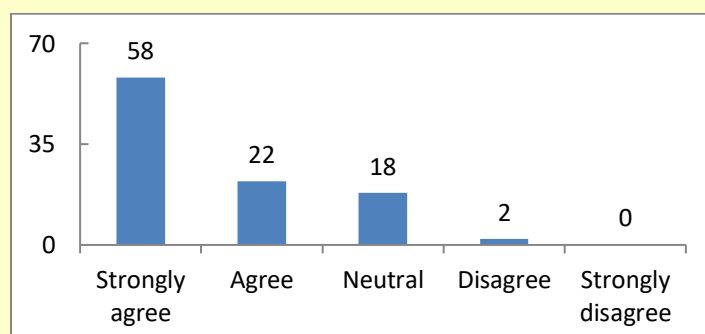
**8. The teaching and monitoring process in your institution facilitates you in cognitive, social and emotional growth**

S. No	Options	Percentage of Response
1	Significantly	55
2	Very well	38
3	Moderately	7
4	Marginally	0
5	Not at all	0
	Total	100



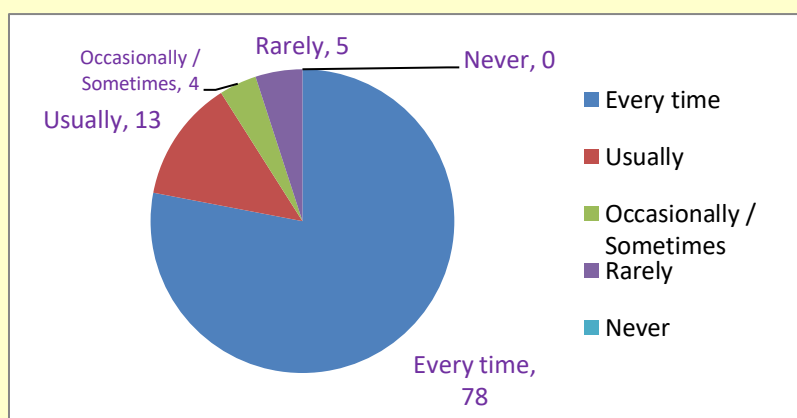
**9. The institute provides multiple opportunities to learn and grow**

S. No	Options	Percentage of Response
1	Strongly agree	58
2	Agree	22
3	Neutral	18
4	Disagree	2
5	Strongly disagree	0
	Total	100



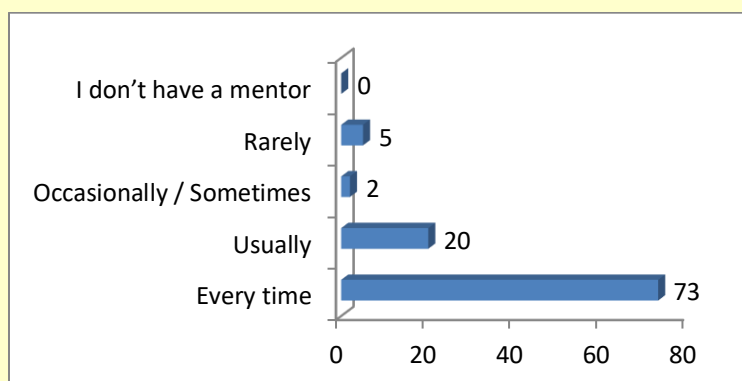
**10. Teachers inform you about your expected competencies, course, outcome and programme outcomes**

S. No	Options	Percentage of Response
1	Every time	78
2	Usually	13
3	Occasionally / Sometimes	4
4	Rarely	5
5	Never	0
	Total	100



**11. Your mentor does a necessary follow – up with an assigned task to you**

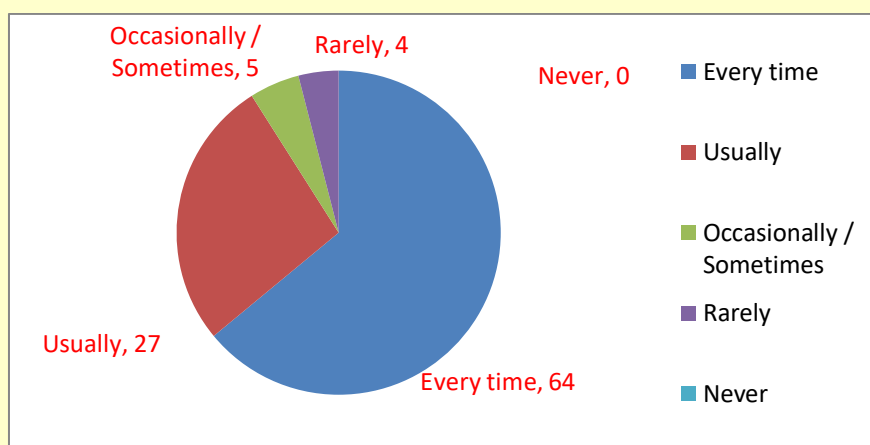
S. No	Options	Percentage of Response
1	Every time	73
2	Usually	20
3	Occasionally / Sometimes	2
4	Rarely	5
5	I don't have a mentor	0
	Total	100





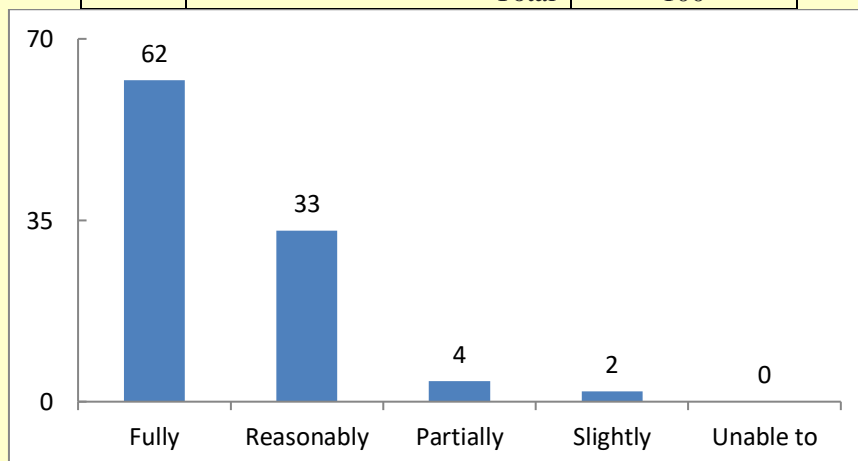
**12. The teachers illustrate the concepts through examples and applications**

S. No	Options	Percentage of Response
1	Every time	64
2	Usually	27
3	Occasionally / Sometimes	5
4	Rarely	4
5	Never	0
	Total	100



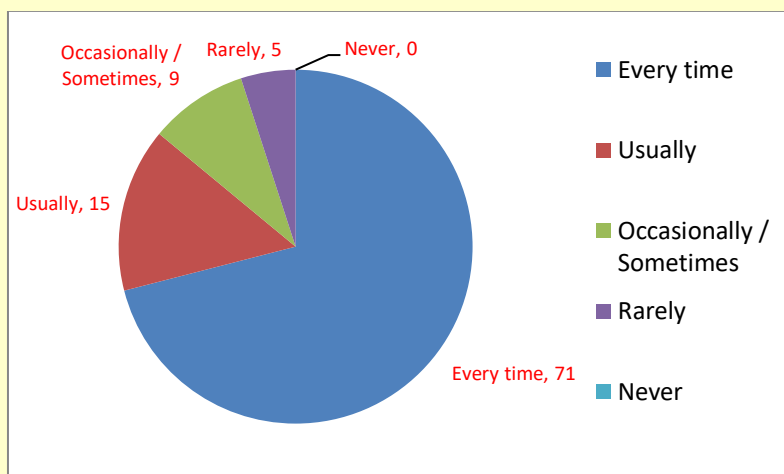
**13. The teachers identify your strengths and encourage you with providing right level of challenges.**

S. No	Options	Percentage of Response
1	Fully	62
2	Reasonably	33
3	Partially	4
4	Slightly	2
5	Unable to	0
	Total	100



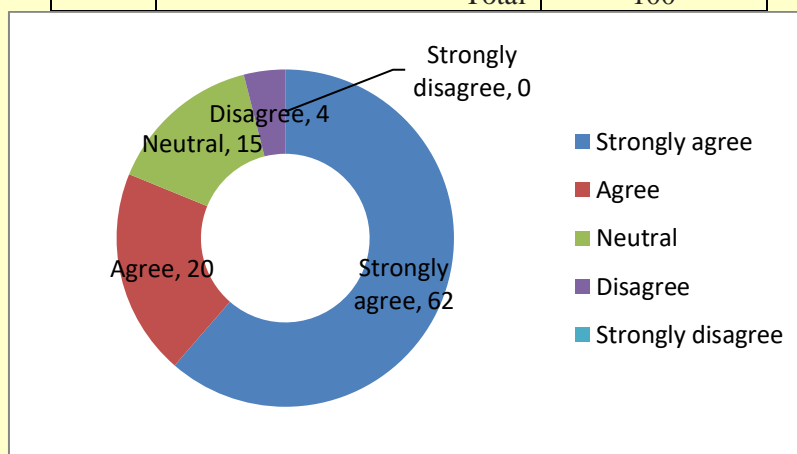
**14. Teachers are able to identify your weaknesses and help you to overcome them**

S. No	Options	Percentage of Response
1	Every time	71
2	Usually	15
3	Occasionally / Sometimes	9
4	Rarely	5
5	Never	0
	Total	100



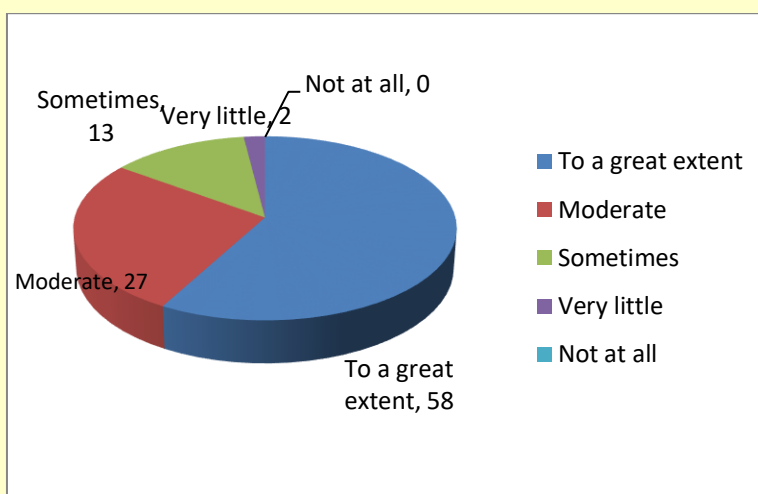
**15. The institution makes effort to engage students in the monitoring, review and continuous quality improvement of the teaching learning process**

S. No	Options	Percentage of Response
1	Strongly agree	62
2	Agree	20
3	Neutral	15
4	Disagree	4
5	Strongly disagree	0
	Total	100



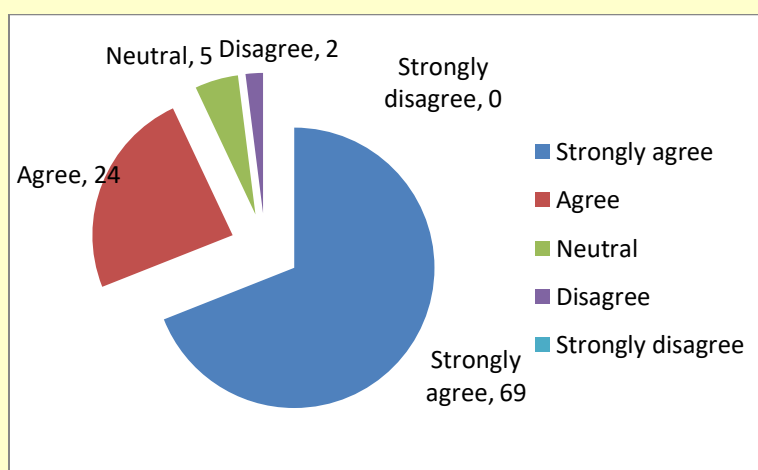
**16. The institute / teachers use student centric methods, such as experimental learning, participative learning and problem solving methodologies for enhancing learning experiences.**

S. No	Options	Percentage of Response
1	To a great extent	58
2	Moderate	27
3	Sometimes	13
4	Very little	2
5	Not at all	0
	Total	100



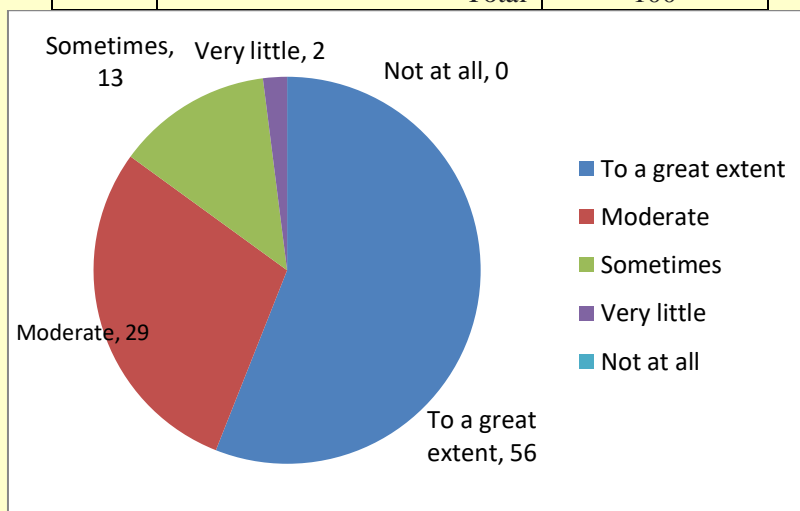
**17. Teachers encourage you to participate in extracurricular activities**

S. No	Options	Percentage of Response
1	Strongly agree	69
2	Agree	24
3	Neutral	5
4	Disagree	2
5	Strongly disagree	0
	Total	100



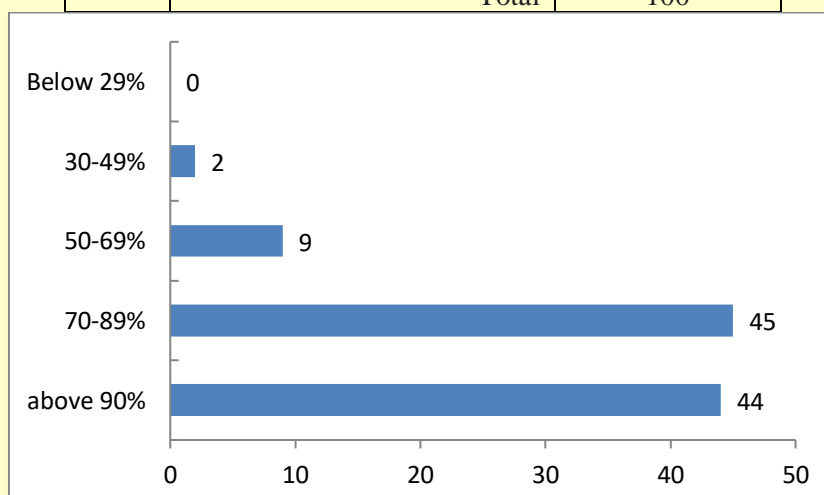
**18. Efforts are made by the institute / teachers to inculcate soft skills, life skills and employability skills to make you ready for the world of work**

S. No	Options	Percentage of Response
1	To a great extent	56
2	Moderate	29
3	Sometimes	13
4	Very little	2
5	Not at all	0
	Total	100



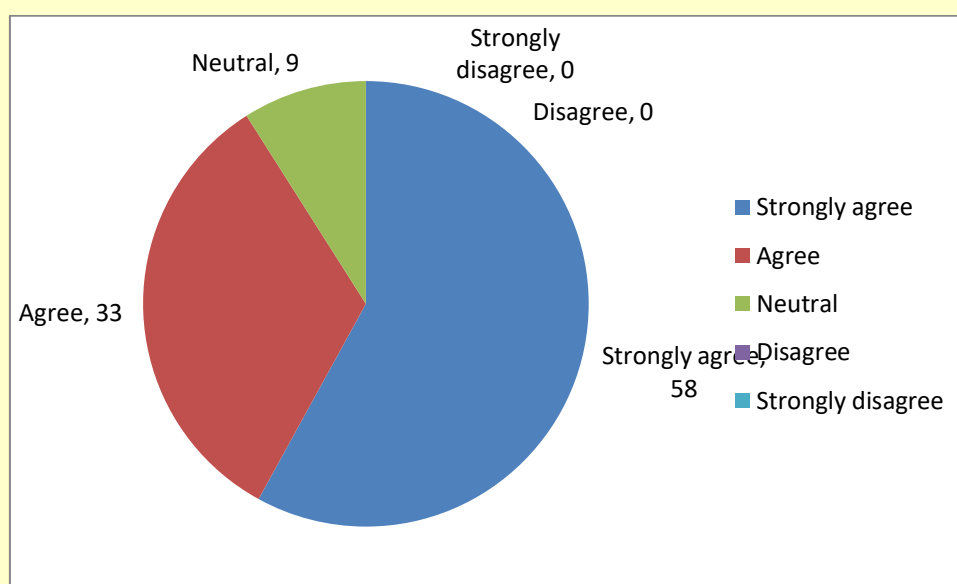
**19. What percentage of teachers use ICT tools such as LCD projector, Multimedia, etc. While teaching**

S. No	Options	Percentage of Response
1	above 90%	44
2	70-89%	45
3	50-69%	9
4	30-49%	2
5	Below 29%	0
	Total	100



**20. The overall quality of teaching – learning process in your institute is very good**

S. No	Options	Percentage of Response
1	Strongly agree	58
2	Agree	33
3	Neutral	9
4	Disagree	0
5	Strongly disagree	0
	Total	100



**21. Give three observations / suggestions to improve the overall teaching – learning experience in your institution**

**Some of Suggestions are listed here**

- Improve lab facilities
- Improve the lab facilities and road facilities
- Need infrastructure and advanced lab facilities
- Provide extra classes to communication skills and provide good equipment of computers
- Please provide games facility, Equipped lab
- Provide games
- Provide advance labs
- We need working computers